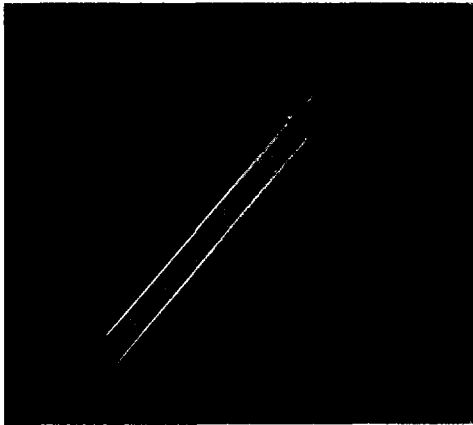
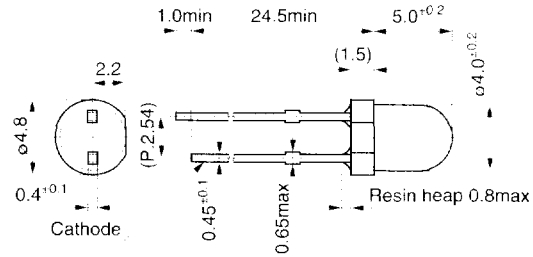


# 4ø round-type contact mount LEDs (for automatic insertion)

## SEL4014 series



Outline drawing (A)

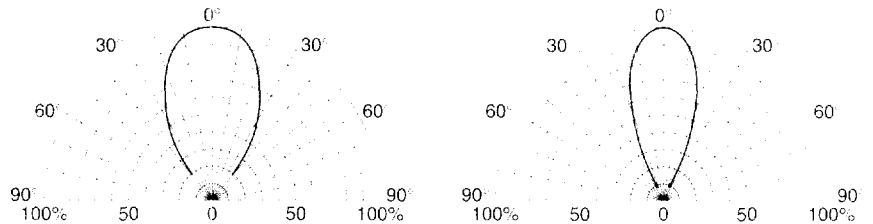


External dimensions: Unit: mm Tolerance: ±0.3

### Absolute maximum ratings (Ta=25°C)

Symbol	Unit	Rating
I <sub>F</sub>	mA	30
I <sub>FP</sub>	mA	100
V <sub>R</sub>	V	3
Top	°C	-30 to +85
Tstg	°C	-30 to +100

### Viewing angle



Viewing angle of a diffused lens

Viewing angle of a non-diffused lens

Type No.	Display form (ø, mm)	Type of lens	Emitting color	Electro-optical characteristics (Ta=25°C)							Outline drawing	
				V <sub>F</sub> (V)		I <sub>F</sub> (mA)		I <sub>F</sub> (mcd)		λ <sub>p</sub> (nm)		Δλ
				typ	max	Combin. I <sub>F</sub> (mA)	max	Combin. V <sub>F</sub> (V)	typ			
SEL4114R	●4	Red tinted, diffused	Red	2.0					10	700	100	A
SEL4114S	●4	Red tinted, non-diffused										
SEL4214R	●4	Light red tinted, diffused	High intensity red	1.9					20	630	35	
SEL4214S	●4	Light red tinted, non-diffused										
SEL4414G	●4	Light green tinted, diffused	Green							560	20	
SEL4414E	●4	Light green tinted, non-diffused										
SEL4714Y	4	Yellow tinted, diffused	Yellow	2.0	2.5	10	50	3		570	40	
SEL4714K	4	Yellow tinted, non-diffused										
SEL4814D	●4	Orange tinted, diffused	Amber	1.9					10	610	35	
SEL4814A	●4	Orange tinted, non-diffused										
SEL4914D	4	Orange tinted, diffused	Orange							587	33	
SEL4914A	4	Orange tinted, non-diffused										